



aridomsanex



CUBE M/T12

Disinfection Atomizer

Decontaminates air and surfaces

6.000 m³

- ▶ EFFECTIVE AGAINST SARS-CoV2* ▶ ELIMINATES VIRUSES AND BACTERIA*
- ▶ FAST-ACTING* ▶ OPTIONAL WIFI CONTROL

* depending on the biocide used

CUBE M/T12

Equipped with a state-of-the-art **1750W** motor and a high precision peristaltic pump, the new **CUBE M/T12** is one of the most powerful atomizers in the world.

The M series comes in three versions, depending on the capacity of the tank.

The standard **CUBE M** model has an integrated 5L tank, covering up to 2.500m³, **CUBE M/T12** and **CUBE M/T25** have dedicated tanks of 12L and 25L, respectively, covering areas up to **6.000m³**, in the case of **CUBE M/T12**, and 12.500m³ for **CUBE M/T25**.

There are multiple applications for this equipment, ranging from surgery wards to production halls in the agricultural fields, such as livestock or vegetable greenhouses. Other applications include: public transport (subway, subway stations, trains, stations, planes, airports, coaches, bus stations), conference rooms, theaters, movie theaters, restaurants, bars, clubs, casinos, movie sets, recording studios, museums, places of worship, production halls, warehouses, supermarkets or hypermarkets.

PROFESSIONAL DISINFECTION ATOMIZER PRECISION CLASS A



HOW DOES IT WORK?

practical

The integrated transport system ensures practical maneuverability and offers the possibility of placing the atomizer in any enclosure

intuitive

One simple push of a button and the biocide is automatically drawn into a peristaltic pump controlled by a high precision servo motor

unique

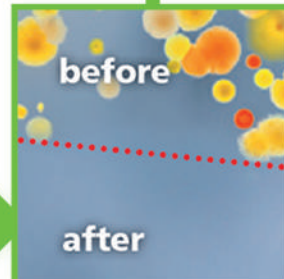
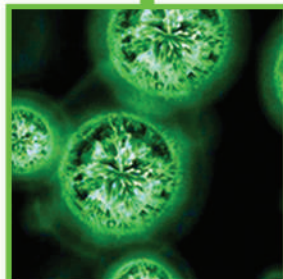
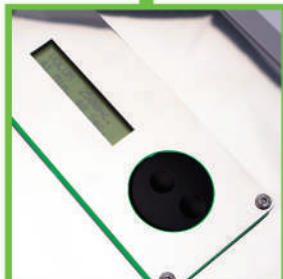
The revolutionary spraying system of the CUBE M/T12 breaks the biocide apart into millions of microparticles

precise

The precise dosage of the biocide allows these microparticles to remain in the air for a long time, thus decontaminating the entire treated volume.

effective

The new CUBE M/T12 successfully eliminates germs and pathogens, regardless of their nature*



* depending on the biocide used

ONE-SHOT 6.000 CUBIC METERS EFFECTIVE AGAINST SARS-COV-2*



fast

The decontamination process of a 200m³ volume is performed in under 3 minutes using only 2ml/m³ of biocide. One may enter the decontaminated space only 15 minutes after the end of the **CUBE M/T12** decontamination process.*

customizable

After purchase, the **CUBE M** can be upgraded to **CUBE M/T12** or **CUBE M/T25**, depending on the requirements, by adding the appropriate tank, 12L or 25L, and upgrading the installed software. This can only be performed by **CUBE Atomizers** qualified personnel.

easy to use

The single button means of digital control of the functions ensures a smooth user experience. Optionally, **CUBE M/T12** can also be operated via WiFi.

high precision

The **CUBE M/T12** allows the user to set the volume of the allocated biocide per cubic meter. The precise dosing of the biocide is performed using a peristaltic pump controlled by a high precision servo motor.



portable

With an unique design and an integrated transport system designed for practical maneuverability, the **CUBE M/T12** can be used in a wide range of domains at the highest standards.



Automatic volume adjustment
(optional WiFi control)

Robust casing made entirely of
AISI304L stainless steel

High precision
peristaltic pump

Integrated 12L
AISI304L stainless steel tank

Integrated transport system
for practical maneuverability

TECHNOLOGY

With the pandemic caused by COVID-19, the importance of a clean environment is greater than ever. With the new **CUBE M/T12** atomizer, effective against the new coronavirus, SARS-CoV-2*, you automate the tedious work of manually decontaminating surfaces, excluding the possibility of any human error.

CUBE M/T12 decontaminates everything, air and surfaces, including all types of electronic devices, sensitive medical equipment, or any piece of furniture, regardless of its shape and size. The whole decontamination process is fast and without residue.*

The main technological innovation brought by the new **CUBE M/T12** is the ultra-precise dosing system which, along with the electronics of the unit, can achieve the correct dispersion of atomized solutions with an accuracy of **0.01ml + - / 1000ml**, regardless of the voltage variations in the electrical network.

With **ONE-SHOT** atomizing capacity of **6.000m³**, **CUBE M/T12** offers a high decontamination degree, allowing an effective use of the treated spaces.

MapN
CERTIFIED



CE



meets EU biocide standards ENs

bactericide activity comply with EN 1040, EN 14561, EN 13727, EN 1276

- pseudomonas aeruginosa
- escherichia coli
- enterococcus hirae
- staphylococcus aureus
- proteus vulgaris
- staphylococcus epidermis
- MRSA
- clostridium difficile cells
- listeria
- streptococcus pyogenes
- salmonella typhimurium
- shigella sonnei
- klebsiella pneumoniae
- proteus mirabilis

virucide activity

- HBV
- HCV
- HIV
- BVDV
- human influenza
- SARS
- vaccinia
- H5N1
- H1N1

fungicide, yeasticide, activity comply with EN 1275, EN 1650, EN 13624 EN 14562

- candida albicans
- aspergillus niger

tuberculosis activity comply with EN 14348

- mycobacterium avium
- mycobacterium terrae

spores activity comply with EN 13704

- clostridium difficile spores activity comply with EN 13704
- clostridium difficile

spores activity complies with EN 14476

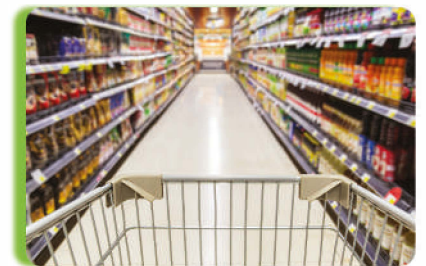
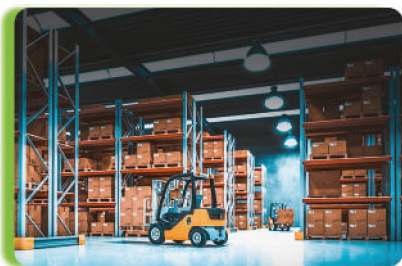
- norovirus
- adenovirus
- rhinovirus
- rotavirus

* depending on the biocide used

DESIGNED FOR HEALTHCARE, USED EVERYWHERE

The **CUBE MT12** was originally developed to prevent the cross-contamination of healthcare professionals in hospitals, medical offices, dental offices, pharmacies, laboratories, retirement homes, rehabilitation centers, quarantine facilities and ambulances. However, as proved by the COVID-19 pandemic, contamination control is not an issue limited to the specific area of healthcare.

Our system of automatic airborne decontamination, the **CUBE MT12**, can also be used in various other applications such as transport (air, road, rail, maritime), nurseries, schools, childcare, restaurants, police stations, funeral homes, hotel rooms, office buildings, apartment buildings, shops, convenience stores, barbershops, beauty clinics, public markets or any other enclosed space measuring up to 6.000 m³.



technical specifications

| | |
|--------------------------|----------------|
| power | 1750W |
| fog output speed | 105 m/sec |
| average flow | 8000 ml/h |
| particle dimension | 3-5 microns |
| atomized solution rate | 2 ml/sec |
| blower pressure rate max | 540 mbar |
| operating speed | 24000 rpm |
| noise level | 115 db |
| tank capacity | 12L |
| weight | 20.1 kg |
| size WxLxH | 384x324x564 mm |

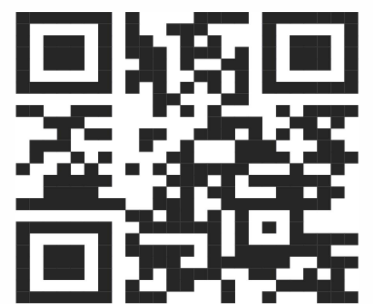
important notice

It is **FORBIDDEN** to use flammable substances or disinfectants based on alcohol or chlorine. Use **ONLY** approved biocides. DO NOT USE in places where fire or explosion hazards may exist.



+44 (0) 1622 395534

info@aridomsanex.co.uk



www.aridomsanex.co.uk